



STEAM EQUIPMENT

WAFER-TYPE NON - RETURN VALVE RD 40 DN 125 - DN 200

DESCRIPTION

The RD40 wafer type disc check valve has a compact design and was specially designed for use with steam and hot condensate. Connections are flanged.

MAIN FEATURES

Low pressure drop.
Simple and compact design.
Overall lengths according to DIN 3202 part 3-K4

OPTIONS: Soft sealing :
EPDM (E), NBR (N), VITON (V), PTFE (T).
Inconel springs

USE : Saturated steam, water and other gases (Group 2)
compatible with the construction .

AVAILABLE

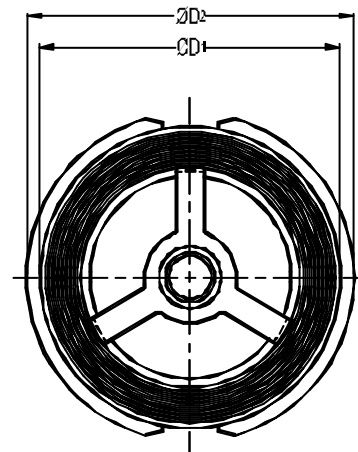
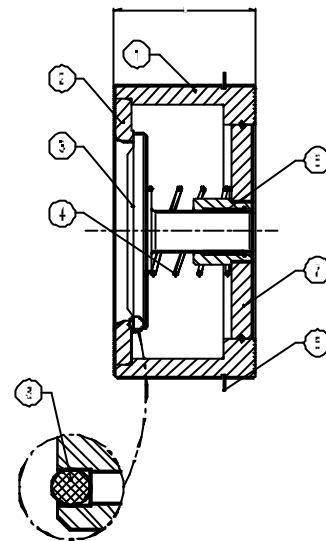
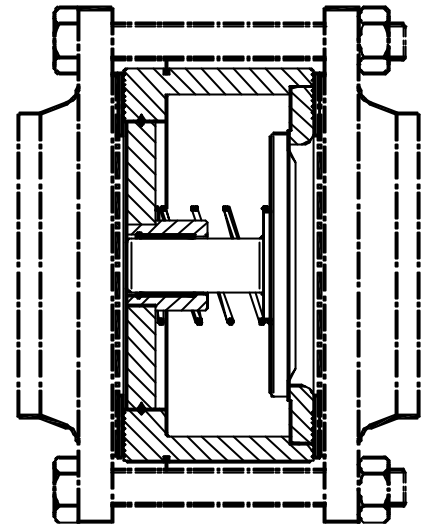
MODELS : RD 40
SIZES : DN 125 to DN 200
CONNECTIONS : Sandwiched between flanges as
per DIN or ANSI.
INSTALLATION : Horizontal or vertical installation .
See IMI, installation and maintenance
instructions.
RATINGS : PN 10 to PN 40

LIMIT OF
OPERATION: As per DIN 2401
CE MARKING (PED - European Directive 97/23/EC)
PN 10/16 :
DN 125 to DN 200 : Category 1 (CE marked).
PN 40 :
DN 125 to DN 200 : Category 2 (CE marked).

MATERIALS

POS.NR.	DESIGNATION	MATERIAL
1	BODY	STEEL / ST52.0
2	SEAT	AISI 316
3*	DISC	AISI 316
4	SPRING	AISI 302
5	CENTERING RING	AISI 304
6	BEARING	STEEL
7	STAR	STEEL
8*	SOFT SEAL	See options

* AVAILABLE SPARE PARTS



DIMENSIONS (mm)							L	Weight Kgs
DN	D1 PN10/PN16	D2 PN25	D2 PN40	D2 ANSI150	D2 ANSI300			
125	192	192	192	192	216	90		
150	218	226	226	218	251	106		
200	273	286	293	273	308	140		